



A Cavagna Group Company

RELIEF VALVE **S27**

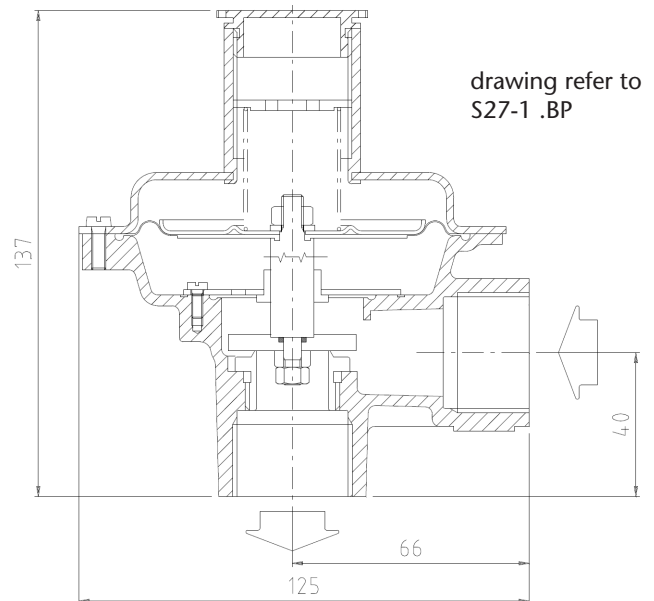


1 DESCRIPTION

The Relief valves mod. **S27** are devices which function is to maintain the pressure in the system or in pressure vessels within the limit set for the intervention. These devices intervene following short-term events, providing to discharge externally a certain quantity of gas when the grid pressure exceeds the calibration pressure, thus avoiding or postponing the intervention of the slam shut devices.

2 MATERIALS

Body:	Die-cast aluminium alloy (EN AB 46100) Pressed steel (UNI EN 10087)
Covers:	Carbon steel (Fe P02 MA RM)
Diaphragms:	Synthetic rubber with cloth reinforcement
Gaskets:	Synthetic rubber
Seats:	Brass
Springs:	Stainless steel



	S27-1				S27-2
	.BP	.MP	.AP	.AP TR	
Connections	1" x 1"				
Design pressure (bar)	5				10
Design Temperature (°C)	-20 ÷ 60				
Outlet pressure range (bar)	<0,15	0,1 ÷ 0,7	0,5 ÷ 1,3	1 ÷ 2,8	2 ÷ 7
Valve seat	20mm				

Mesura S.A.S.
TECHNOPOLE FORBACH SUD
 Rue Robert BUNSEN - CS 50102 - 57602 FORBACH CEDEX - France
www.mesura.fr